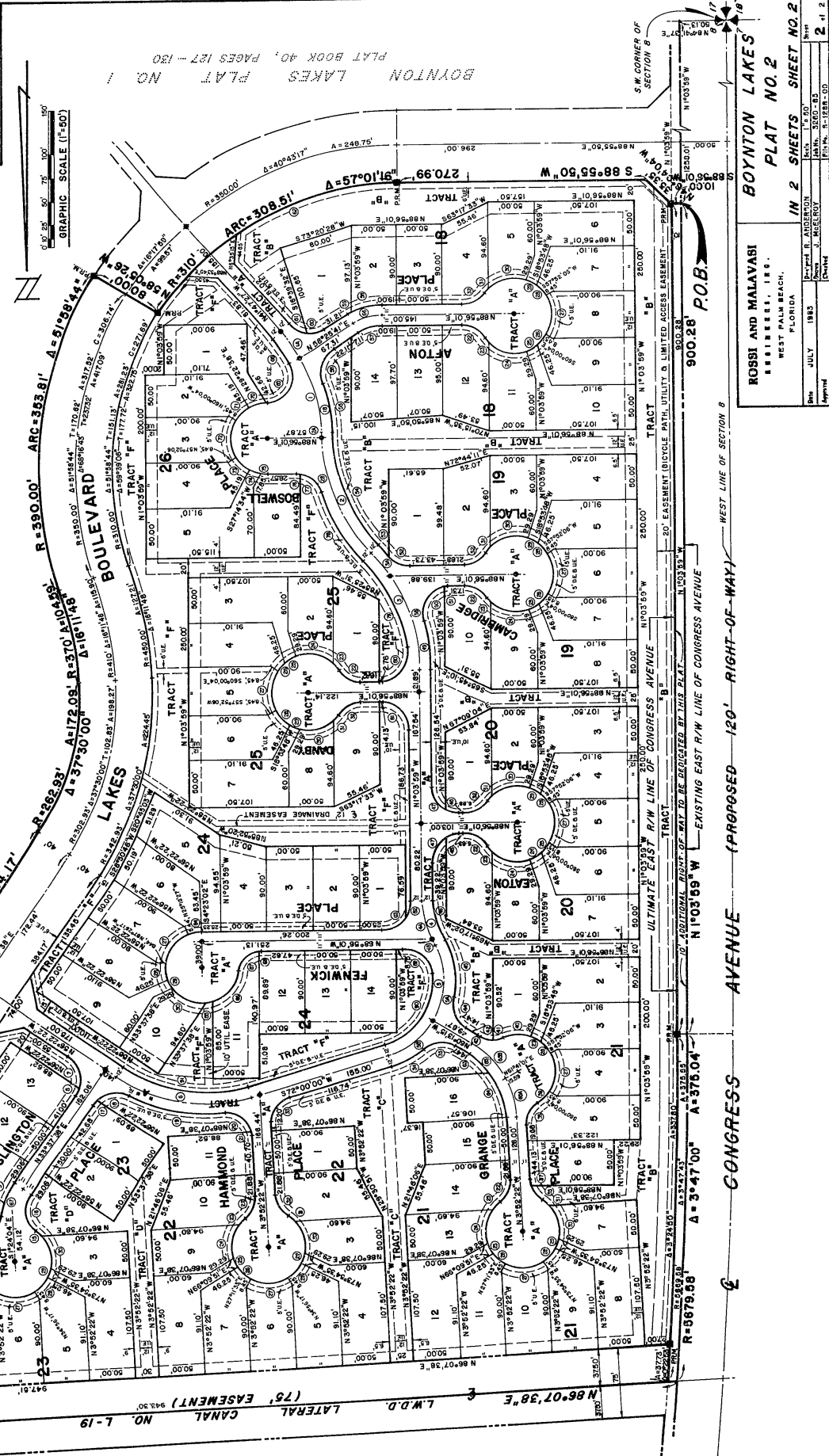


BOYNTON LAKES - PLAT NO. 2 (P.U.D.)
IN SECTION 8, TOWNSHIP 45 SOUTH, RANGE 43 EAST
CITY OF BOYNTON BEACH
PALM BEACH COUNTY, FLORIDA
JULY, 1983

STATE OF FLORIDA
COUNTY OF PALM BEACH
This Plat was filed for record at _____
on _____ day of _____
1983 at _____ o'clock
By _____
JOHN B. DONALD, Clerk Circuit Court
Palm Beach County, Florida

NOT PLATTED



GRAPHIC SCALE (1"=50')

BOYNTON LAKES PLAT NO. 2
PLAT BOOK 40, PAGES 127-130

ROSSI AND MALYAVSI ENGINEERS, INC. WEST PALM BEACH, FLORIDA		BOYNTON LAKES PLAT NO. 2	
Date	JULY 1983	Sheet	IN 2 SHEETS
Drawn by	JOHN B. DONALD	Scale	1" = 50'
Checked by	JOHN B. DONALD	Plat No.	30-00-03
Approved by	JOHN B. DONALD	File No.	3-1281-03
		Sheet No.	2 of 2

CONGRESS AVENUE (PROPOSED) 120' RIGHT-OF-WAY

900.28' P.O.B.

WEST LINE OF SECTION 8