



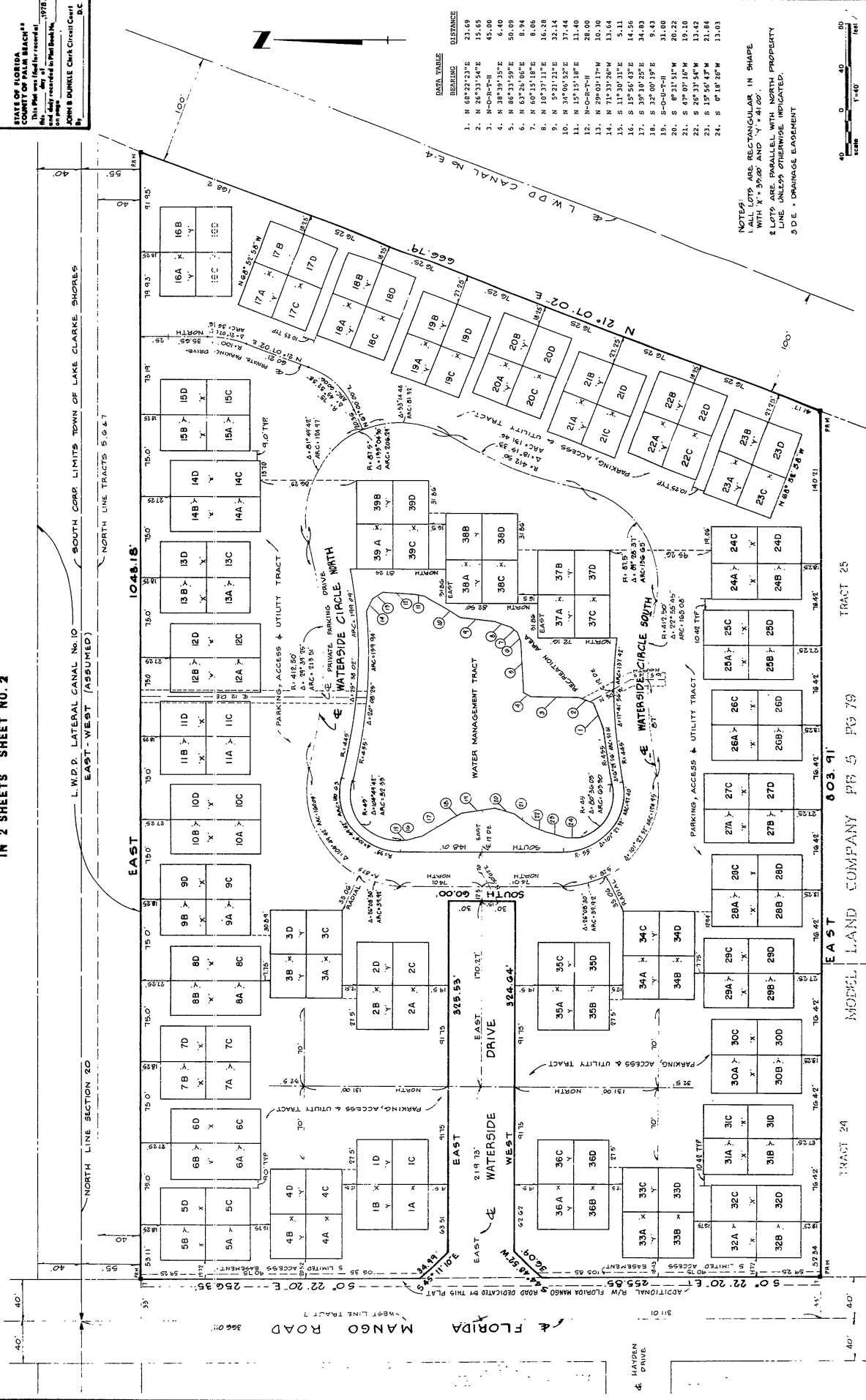
# WATERSIDE ESTATES

BEING A REPLAT OF A PORTION OF TRACTS 5, 6 & 7, MODEL LAND COMPANY'S SUBDIVISION PLAT BOOK 5, PAGE 79 IN SECTION 20 TOWNSHIP 44 SOUTH, RANGE 43 EAST, PALM BEACH COUNTY, FLORIDA

IN 2 SHEETS SHEET NO. 2

194

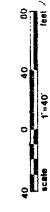
STATE OF FLORIDA  
COUNTY OF PALM BEACH  
This Plat was filed for record on  
the 15th day of May, 1978  
at 10:00 AM  
in Public Records Book No. 1778  
at Page 10  
JOHN B. DUNKLE, Clerk Circuit Court  
D.C.



DATA TABLE

BEARING	DISTANCE
1. N 69°22'32"E	23.69
2. N 26°33'54"E	15.65
3. N 0°-0'-0"H	45.00
4. N 38°33'35"E	6.40
5. N 86°33'59"E	50.09
6. N 63°25'06"E	8.94
7. N 10°37'18"E	8.06
8. N 87°22'22"E	16.28
9. N 87°22'22"E	32.14
10. N 15°15'18"E	11.40
11. N 15°15'18"E	11.40
12. N 0°-0'-0"H	28.00
13. N 29°03'17"W	10.30
14. N 71°33'26"W	13.64
15. S 11°30'31"E	5.11
16. S 15°56'43"E	14.56
17. S 39°10'25"E	34.83
18. S 32°00'19"E	9.43
19. S 0°-0'-0"H	31.00
20. S 8°21'51"W	20.22
21. S 47°07'16"W	19.10
22. S 20°33'54"W	13.42
23. S 13°56'44"W	21.84
24. S 0°18'20"W	13.03

NOTES:  
1. ALL LOTS ARE RECTANGULAR IN SHAPE WITH "X" = 93.00' AND "Y" = 41.00'.  
2. LOTS ARE PARALLEL WITH NORTH PROPERTY LINE UNLESS OTHERWISE INDICATED.  
3. D.E. = DRAINAGE EASEMENT



TRACT 25

MODEL LAND COMPANY PB 5 PG 79

TRACT 24

603.91'